

Technical Bulletin

Bulletin No. 042 Rev B
Subject: Setup Instructions for the E-mail Alerts Function of the Oasis Central Irrigation Water Management Software

Page 1 of 16
Product Applicability: Oasis Central Control System
Approved by: Jim Sieminski
Release Date: September 18, 2007
Distribution: APPROVED FOR GENERAL RELEASE

<u>Section</u>	<u>Description</u>	<u>Page</u>
1.0	Introduction	2
2.0	Setup Requirements	3
3.0	E-mail Alerts Setup Instructions - Microsoft Windows XP® Professional Operating System	3
4.0	E-mail Alerts Setup Instructions - Oasis Central Irrigation Water Management Software	14

1.0 INTRODUCTION

The Oasis Central Irrigation Water Management System has an E-mail Alerts function that will send alarm notifications to any e-mail address or any cell phone that has SMS (Short Message Service, more commonly known as text messaging) capability. Alarm notifications may include flow and amperage violations, weather alarms for rain, wind and ET (EvapoTranspiration), and controller communication failures.

In addition to the E-mail Alerts function, the Oasis Central Irrigation Water Management System allows the user (Project Administrator) to setup unique login and password accounts for multiple users. Specific controllers are then assigned to these individual accounts. These user specific logins limit the individual user's access to the controllers that have been assigned to them. The individual user then has the ability to input up to four E-mail Alerts.

NOTE: Each unique user login may have up to four E-mail Alerts. The four E-mail Alerts are a combination of e-mail addresses and/or SMS addresses.

The purpose of this document is to provide the user with the information required to enable the E-mail Alerts function of the Oasis Central Irrigation Water Management software. The following pages of this document provide specific instructions, complete with screen capture menus, for required setup changes within the Microsoft Windows XP® Professional computer operating system and the Oasis Central Irrigation Water Management software.

Upon successful completion of these instructions, the user may test the E-mail Alerts function by way of the Send Test button provided within the Oasis Central Irrigation Water Management System Software. A sample E-mail is depicted in Figure 1.



FIGURE 1 – Test E-Mail from Oasis Central

2.0 SETUP REQUIREMENTS

- 2.1 Oasis Central Irrigation Water Management software pre-installed on a computer with the Microsoft Windows XP® Professional Operating System.
- 2.2 The E-mail Alerts option requires an internet connection.
- 2.3 Close all Windows programs before installation.
- 2.4 This process may require the original Microsoft Windows XP® Professional Installation Disc.

3.0 E-MAIL ALERTS SETUP INSTRUCTIONS – Microsoft Windows XP® Professional Operating System

- 3.1 Open the **Control Panel** from the Windows Start button; the menu path is Start, Control Panel...or...Start, Settings, Control Panel. The Control Panel menu is displayed as depicted in Figure 2.

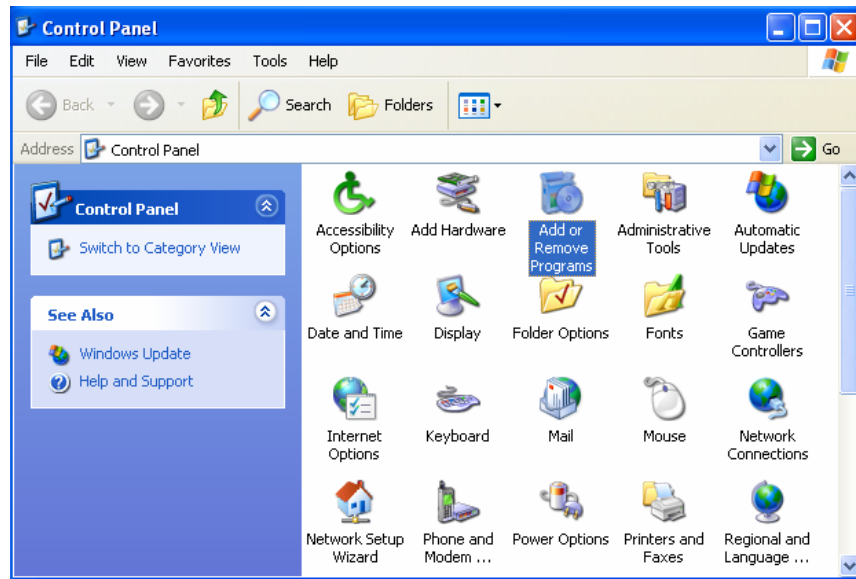


FIGURE 2 – Control Panel Menu

- 3.2 Double click on the **Add or Remove Programs** icon to open the menu as depicted in Figure 3.

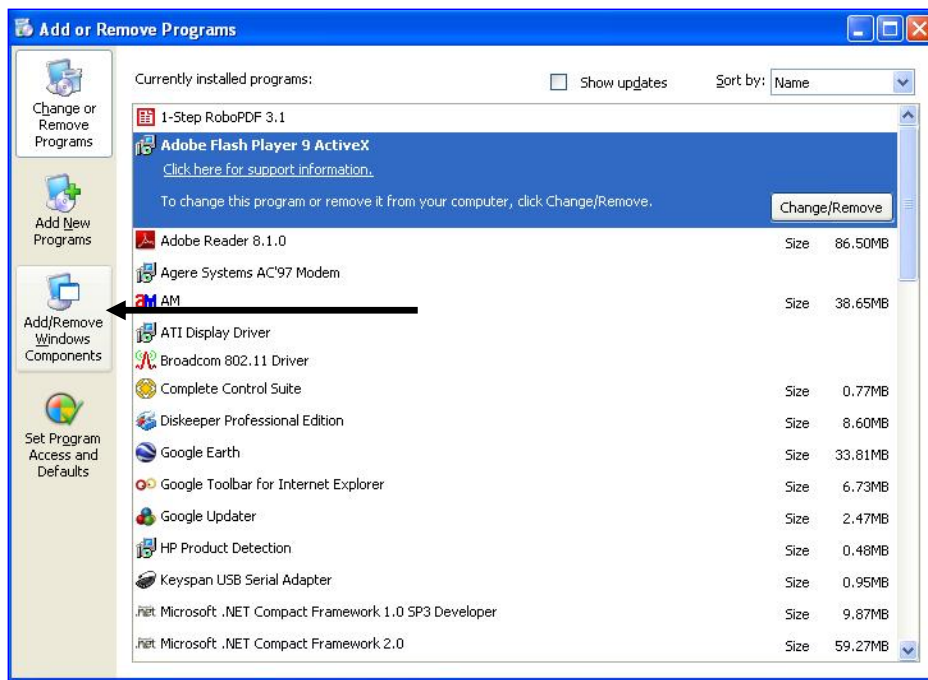


FIGURE 3 – Add or Remove Programs Menu

- 3.3 Click on **Add/Remove Windows Components** as depicted in Figure 3. The Windows Components Wizard will open as depicted in Figure 4.

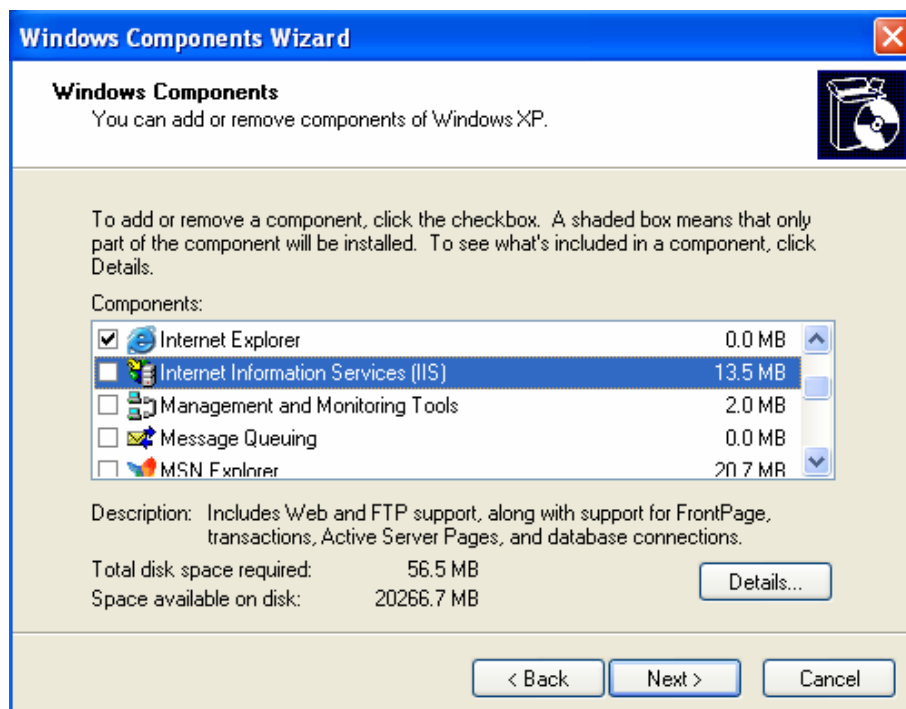


FIGURE 4 – Windows Components Wizard Menu

- 3.4 Select the checkbox next to the **Internet Information Services (IIS)** option and then click **Next**.

NOTE: If the (IIS) checkbox is already checked, click on **Cancel** and then proceed to Step 3.10.

- 3.5 The installation will now proceed and the **Windows Components Wizard** menu is displayed as depicted in Figure 5.

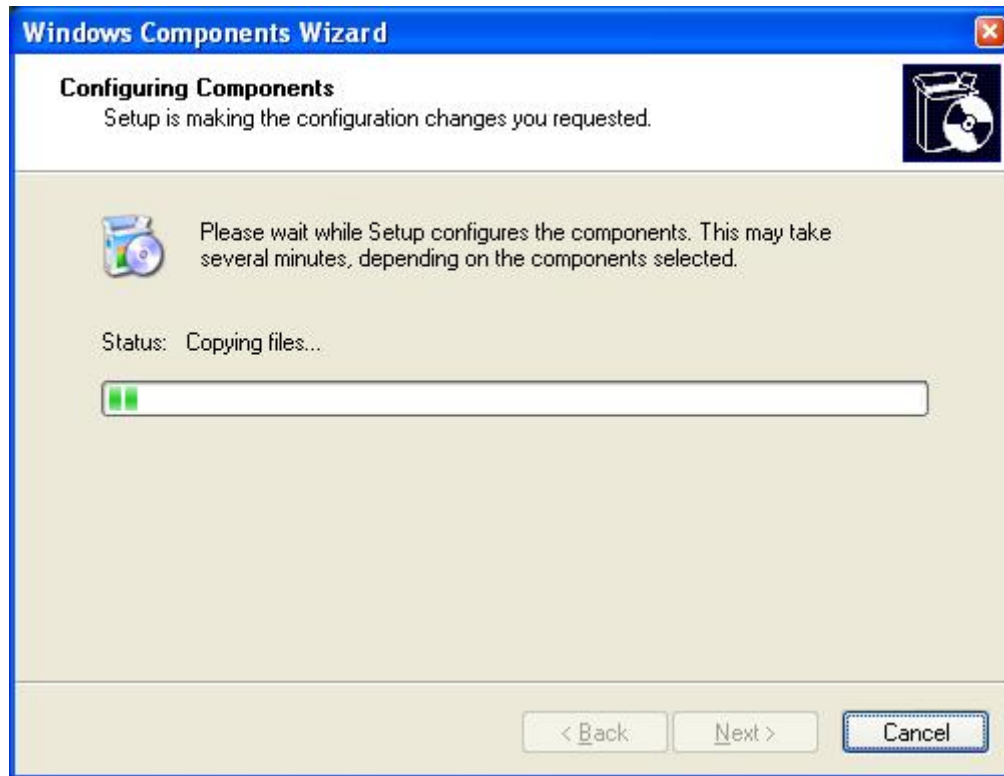


FIGURE 5 – Windows Components Wizard Menu

- 3.6 You may be prompted to insert the Windows XP® Professional Installation Disc into the CD-ROM drive as depicted in Figure 6. Insert the CD as instructed and then click on OK.

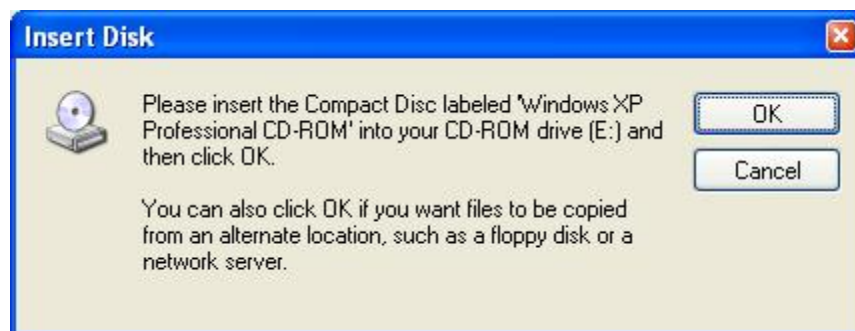


FIGURE 6 – Insert Disk Menu

- 3.7 The **Welcome** menu may be displayed as depicted in Figure 7. Click on **Exit** to close this menu and return to the Window Components Wizard menu.



FIGURE 7 – Welcome to Microsoft Windows XP Menu

- 3.8 Upon completion of the installation the **Windows Components Wizard** menu will appear as depicted in Figure 8. Click on **Finish** and remove the CD from the drive.



FIGURE 8 – Windows Components Wizard Menu

3.9 Close the **Add/Remove Windows Components** menu.

3.10 The **Control Panel** menu as depicted in Figure 9 should still be open from Step 3.1. (If not, the menu path is Start, Control Panel...or...Start, Settings, Control Panel). Double click on the **Administrative Tools** icon.

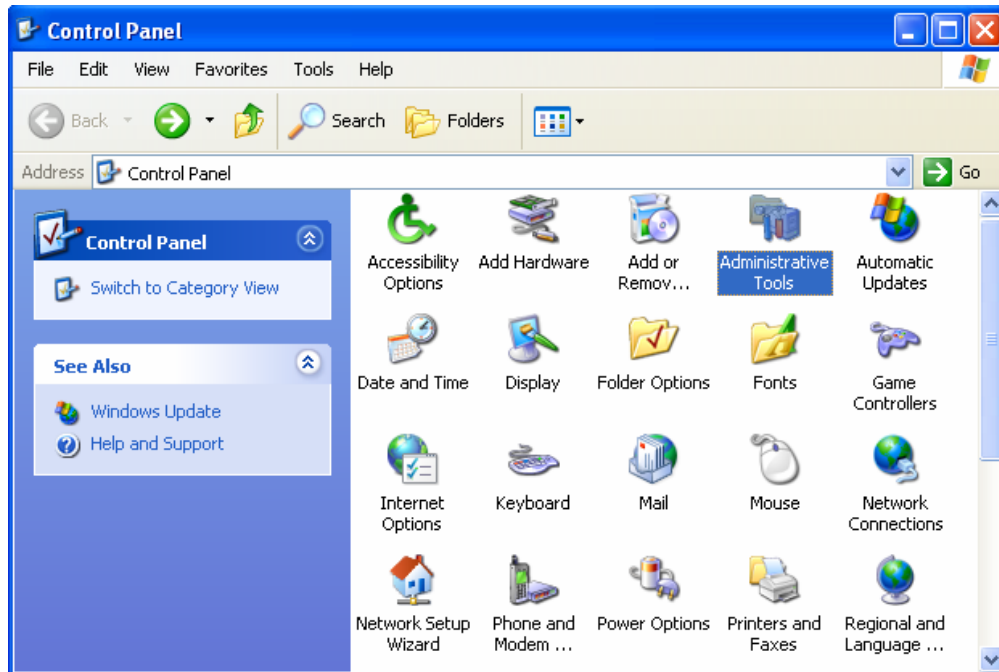


FIGURE 9 – Control Panel Menu

3.11 The **Administrative Tools** menu is displayed as depicted in Figure 10. Double click on the **Internet Information Services** icon.

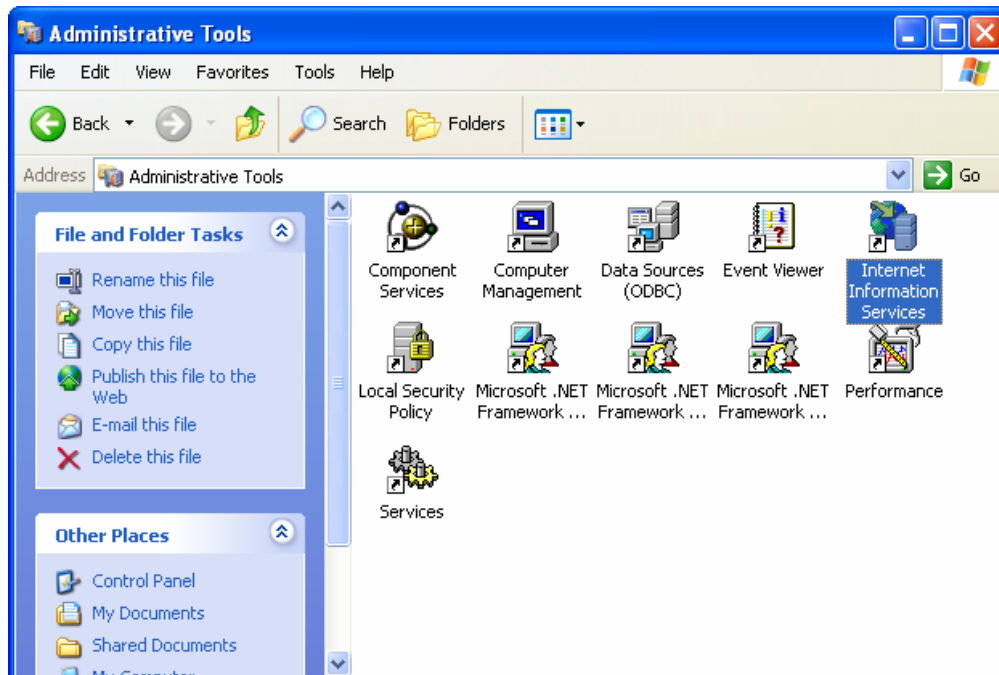


FIGURE 10 – Administrative Tools Menu

3.12 The **Internet Information Services** menu is displayed as depicted in Figure 11.

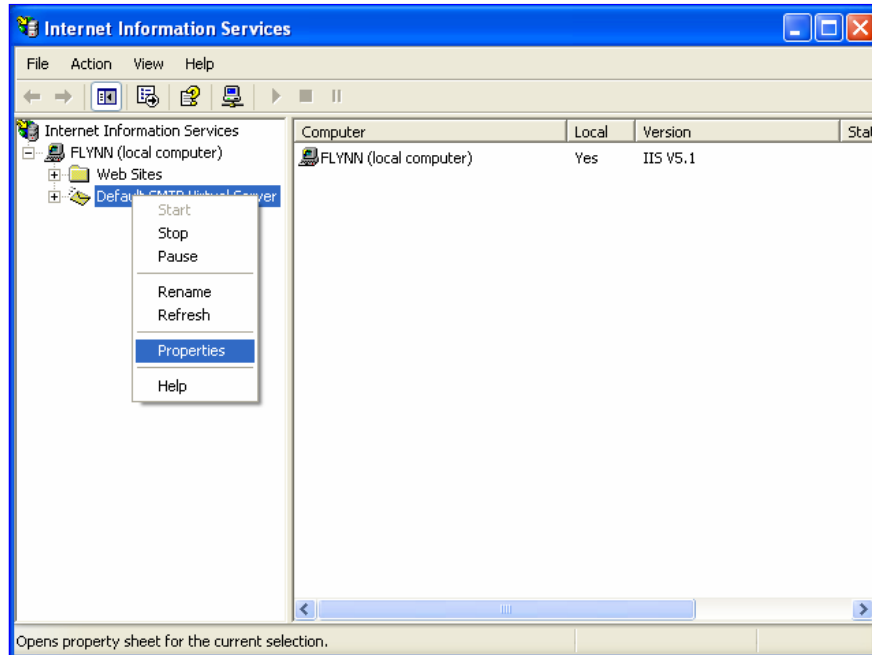


FIGURE 11 – Internet Information Services Menu

3.13 Expand the menu tree on the left side of the **Internet Information Services** menu as shown in Figure 11. Cursor over **Default SMTP Virtual Server** and then click the right mouse button to display the drop-down menu. From the drop-menu select **Properties**.

3.14 The **Default SMTP Virtual Server Properties** menu is displayed as depicted in Figure 12. Select the **Access** tab as shown and then click on the **Connection** button.



FIGURE 12 – Default SMTP Virtual Server Properties Menu

3.15 The **Connection** menu is displayed as depicted in Figure 13. Select **Only the list below** and then click on the **Add...** button.

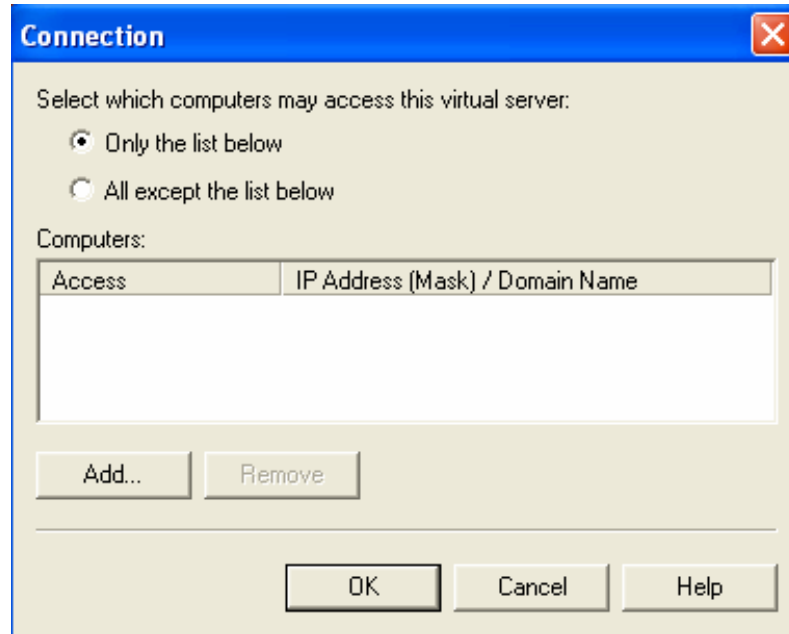


FIGURE 13 – Connection Menu

3.16 The **Computer** menu is displayed as depicted in Figure 14.

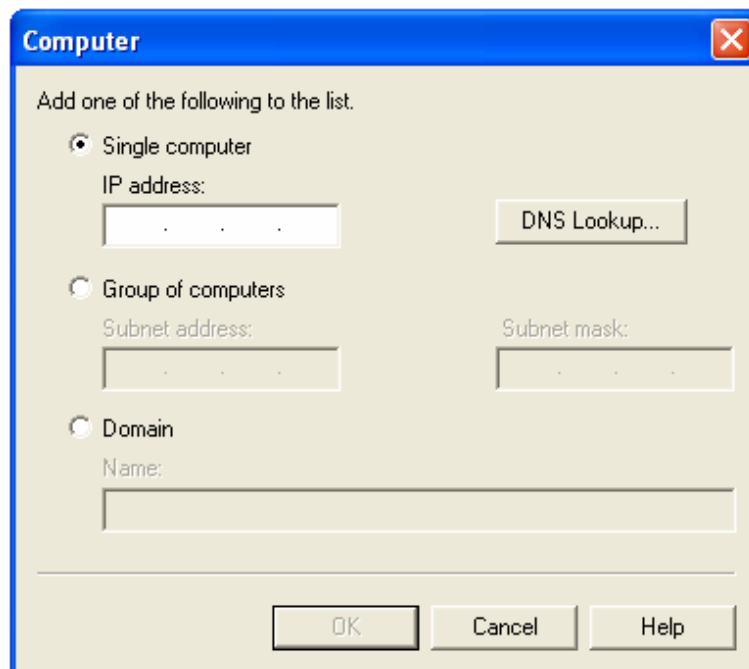


FIGURE 14 – Computer Menu

3.17 You will need the IP Address of the computer you are using in order to complete the next several steps. To obtain the IP address the menu path is Start, All Programs, Accessories, Command Prompt...or...Start, Programs, Accessories, Command Prompt. The **Command Prompt** menu is displayed as depicted in Figure 15.

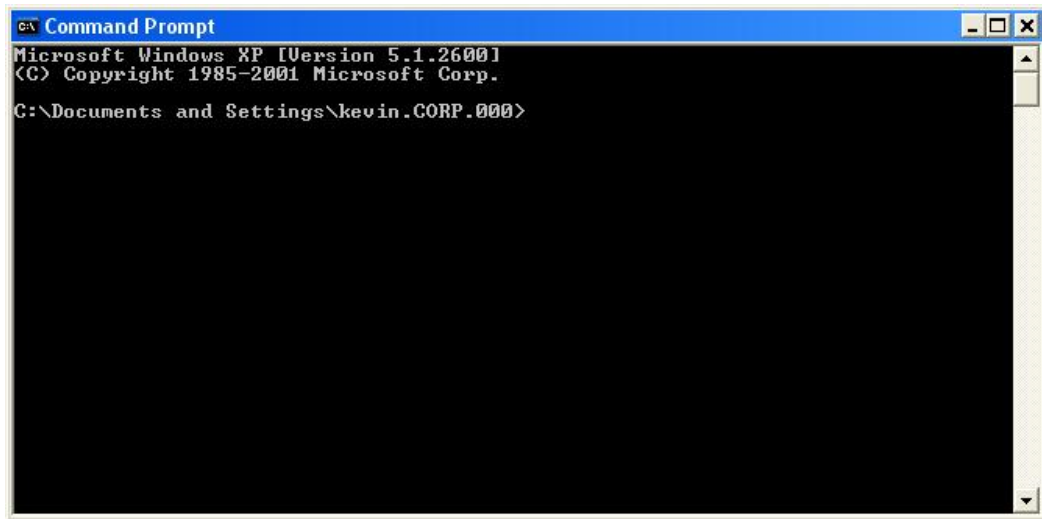


FIGURE 15 – Command Prompt Window

3.18 In the Command Prompt window, type **IPCONFIG** and then press **Enter**. The IP Address is identified in the information returned as depicted in Figure 16. In this instance, the IP Address is 192.168.1.100. Make a note of the IP Address so that you may enter it where instructed to do so and then close the Command Prompt window.

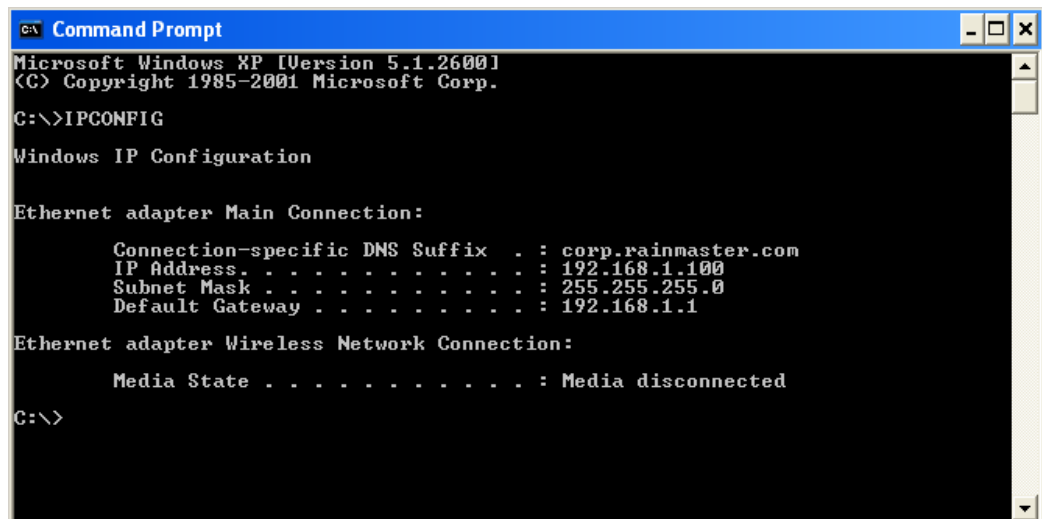


FIGURE 16 – Command Prompt Window

3.19 In the Computer menu depicted in Figure 17, select the **Single computer** radio button and enter the IP Address from Step 3.18. Click on **OK** to save.

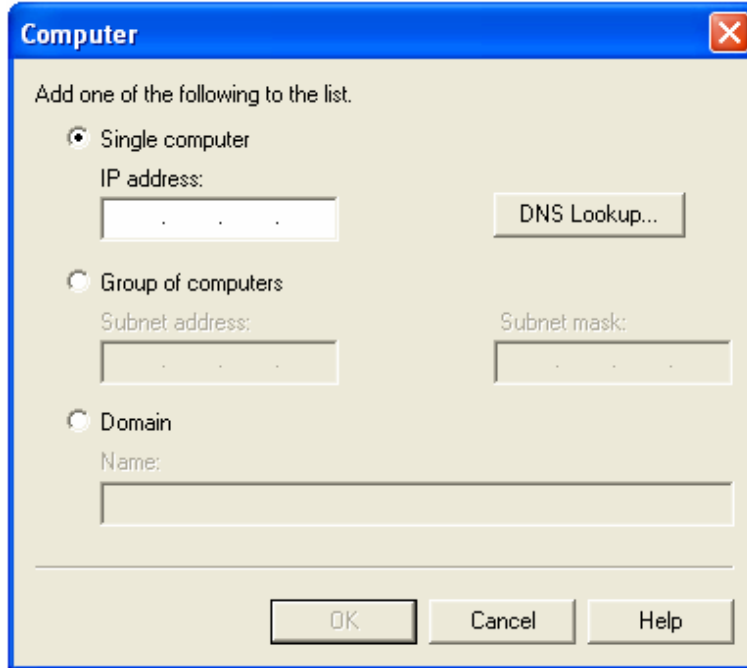


FIGURE 17 – Computer Menu

3.20 The **Connection** menu is displayed as depicted in Figure 18. Click on **OK**.

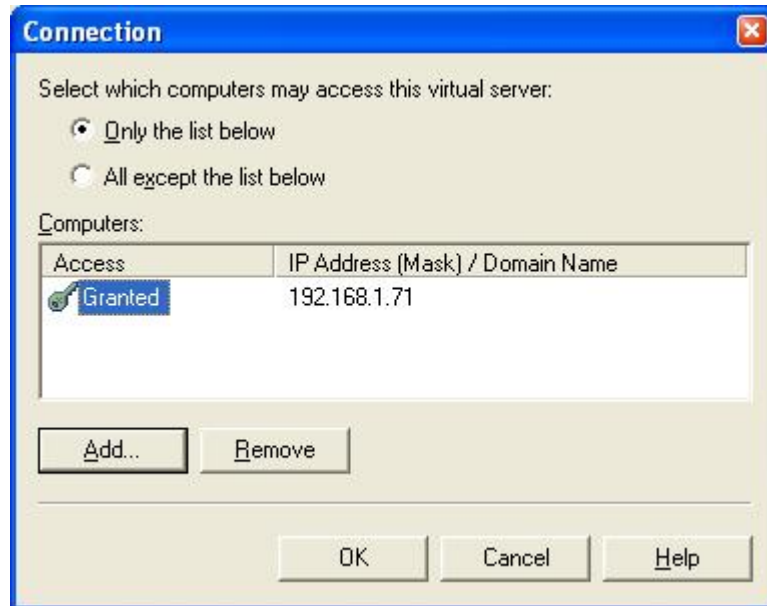


FIGURE 18 – Connection Menu

3.21 The **Default SMTP Virtual Server Properties** menu is displayed as depicted in Figure 19. Click on the **Relay** button.

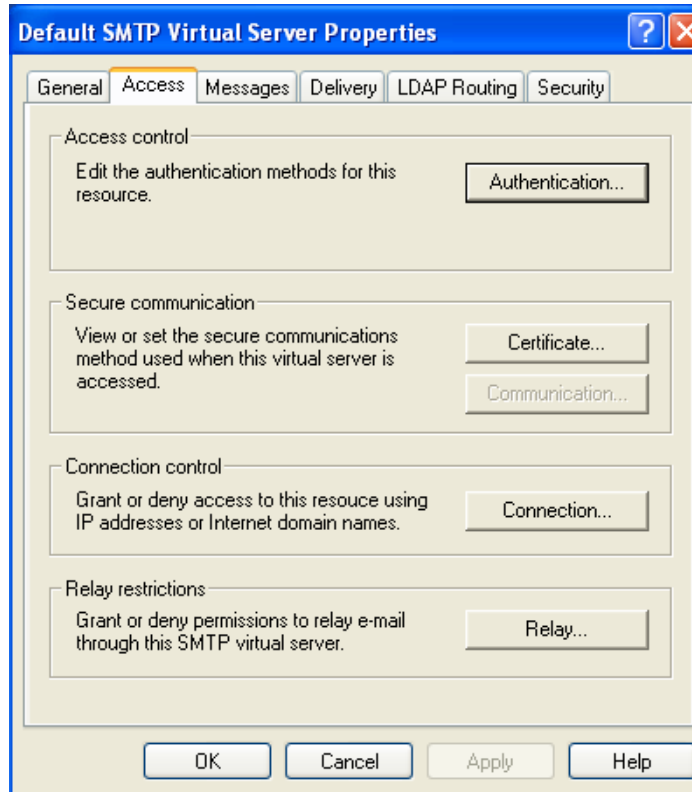


FIGURE 19 – Default SMTP Virtual Server Properties Menu

3.22 The **Relay Restrictions** menu is displayed as depicted in Figure 20.

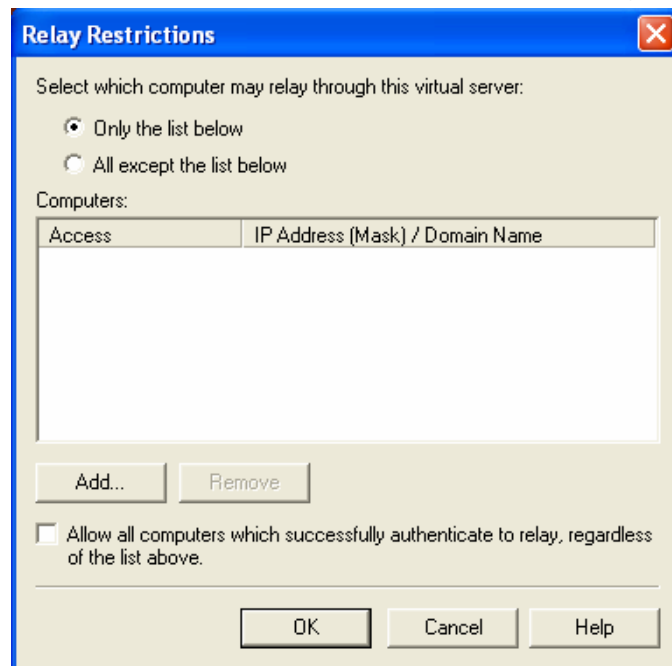


FIGURE 20 – Relay Restrictions Menu

3.23 Refer to Figure 20. Select the **Only the list below** radio button.

NOTE: Be sure that the checkbox next to...
Allow all computers which successfully authenticate to relay, regardless of the list above.
...is **NOT CHECKED** and then click on the **Add...** button.

3.24 The **Computer** menu is displayed as depicted in Figure 21. Select the **Single computer** radio button, enter the IP Address from Step 3.18 and then click on **OK**.

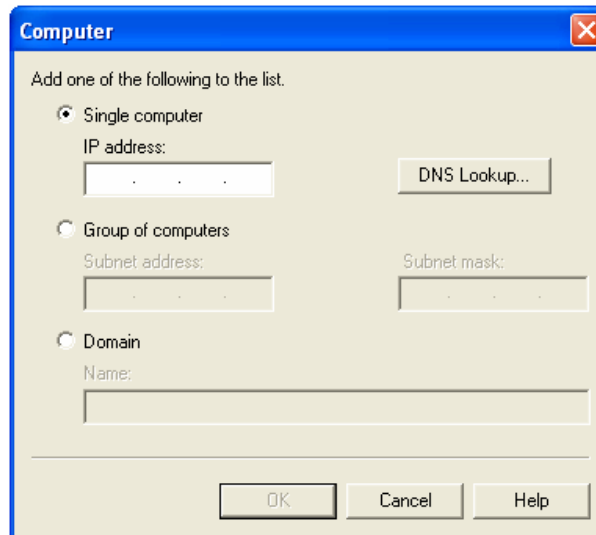


FIGURE 21 – Computer Menu

3.25 The **Relay Restrictions** menu is displayed as depicted in Figure 22. Click on **OK** to return to the Default SMTP Virtual Server Properties menu.

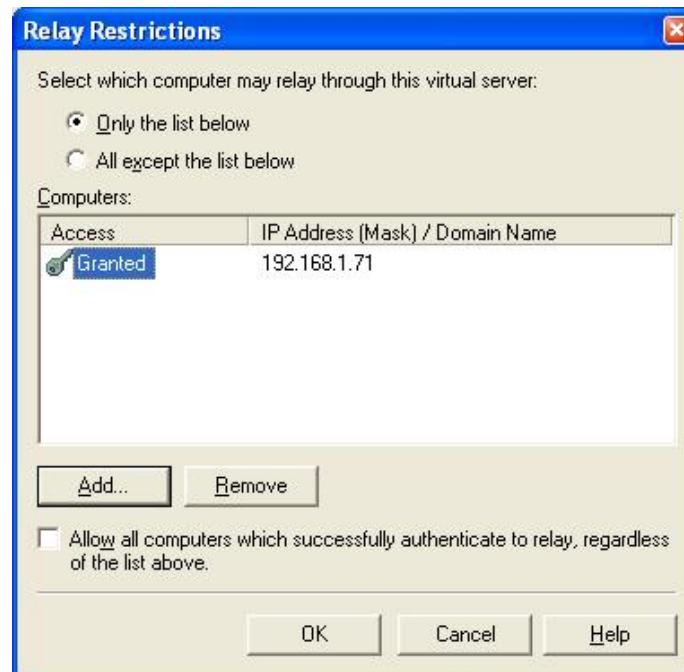


FIGURE 22 – Relay Restrictions Menu

- 3.26 The Default SMTP Virtual Server Properties menu is displayed as depicted in Figure 23. Click on the **Apply** button to save the changes and then click on **OK** to exit.

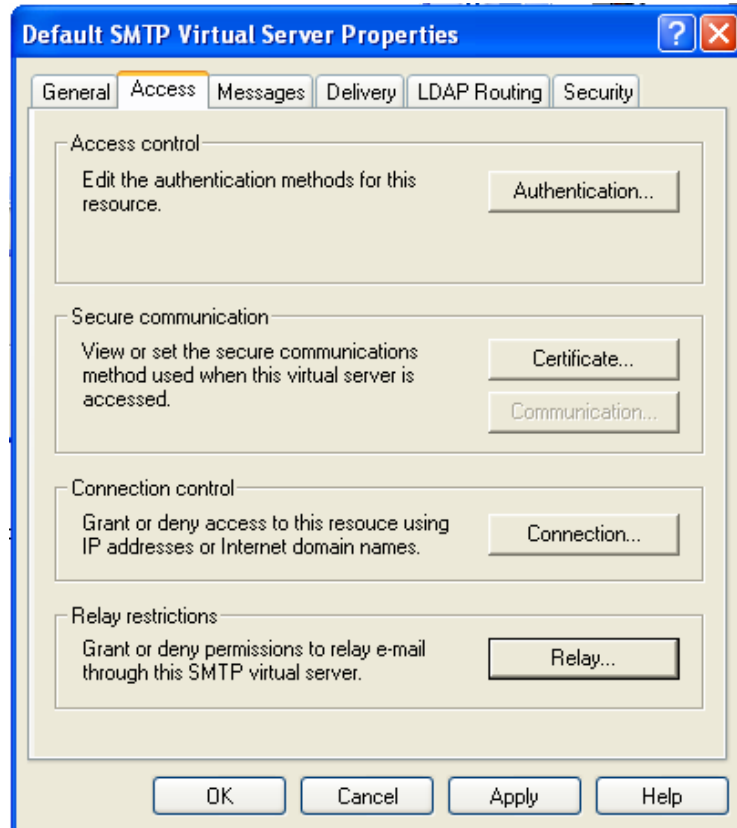


FIGURE 23 – Default SMTP Virtual Server Properties Menu

- 3.27 This completes the E-mail Alerts setup for the Microsoft Windows XP® Professional operating system.
- 3.28 Close all open windows.

4.0 E-MAIL ALERTS SETUP INSTRUCTIONS – Oasis Central Irrigation Water Management Software

- 4.1 Launch the Oasis software application by double clicking the desktop shortcut icon.
- 4.2 When prompted, enter the **ID:** and **Password:** and then press **Enter**.
- 4.3 Navigate to the **E-Mail Alerts** menu. The menu path is Central System, Setup, User Settings, E-Mail Alerts. The User Setup menu will be displayed as depicted in Figure 24.

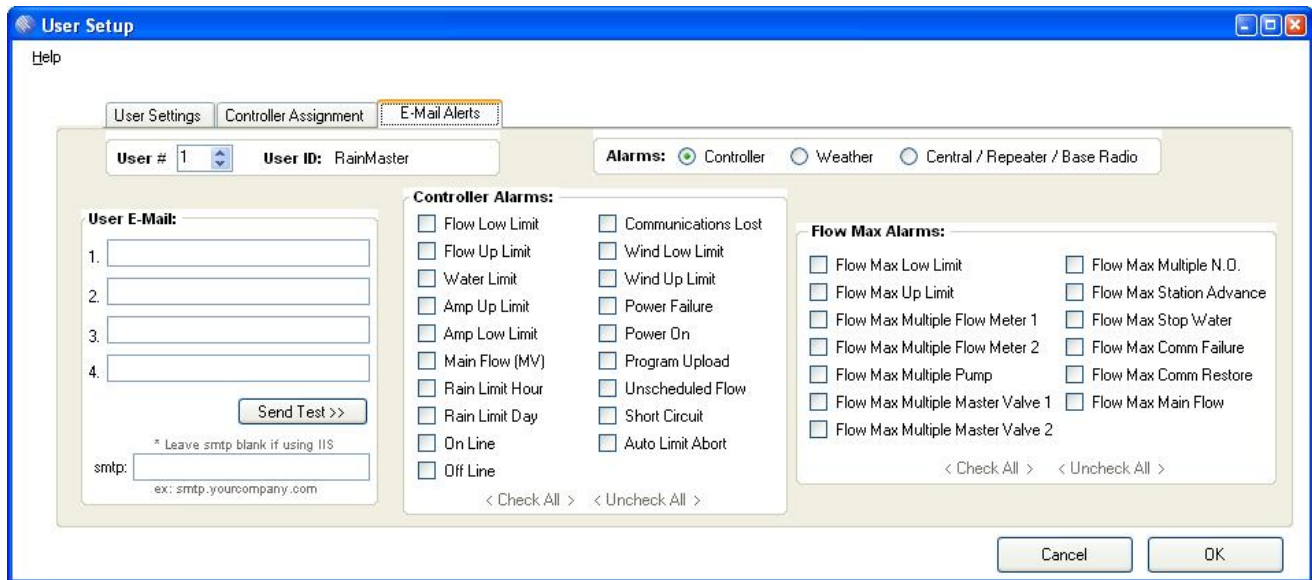


FIGURE 24 – User Setup

- 4.4 Populate the **User E-Mail** list with up to four e-mail addresses and/or SMS addresses and then select the type of alarm notifications you would like to receive from the lists provided.

NOTE: Examples of SMS addresses for the different wireless carriers;

AT&T Wireless	1234567890@mmode.com
Cingular Wireless	1234567890@mms.mycingular.com
Sprint PCS	1234567890@messaging.sprintpcs.com
Verizon Wireless	1234567890@vtext.com
T-Mobile	1234567890@tmomail.net
Nextel	1234567890@messaging.nextel.com
U.S. Cellular	1234567890@email.uscc.net

- 4.5 Refer to Figure 24. After the User E-Mail list has been established and the alarm types have been selected, you may send a test e-mail to all of the addresses listed. Click on the **Send Test>>** button and a sample e-mail notification will be sent as depicted in Figure 25.

NOTE: It may be necessary to add **oasiscentral@rainmaster.com** to your Spam Filter acceptable e-mails list.

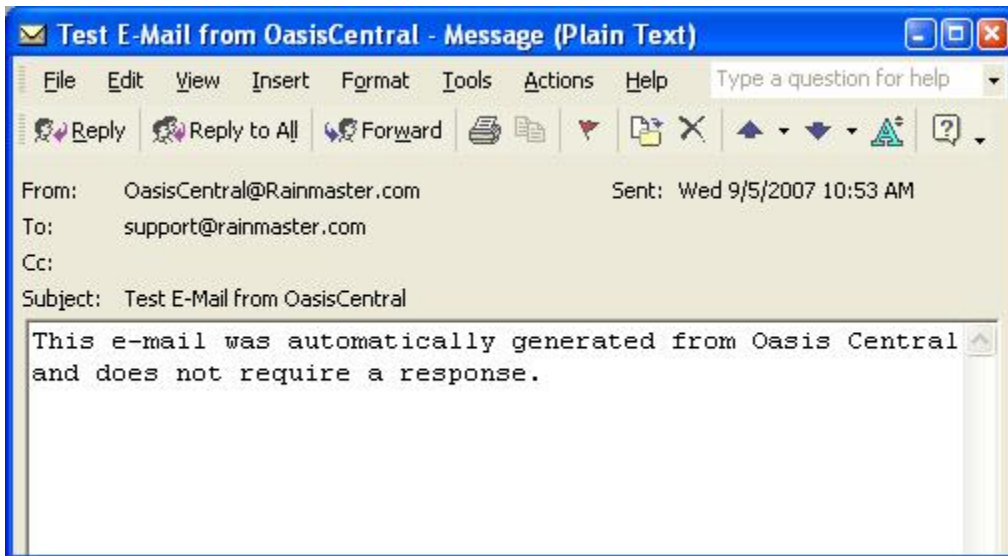


FIGURE 25 – Test E-Mail from Oasis Central

4.6 Refer to Figure 24. Click **OK** to save the changes and close the User Setup menu.

End of Bulletin